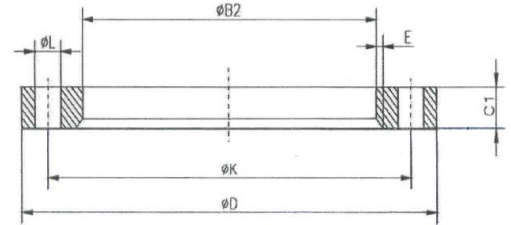


Lap Joint Flanges with red.thickness similar EN 1092-1 type 02 *)

All faces machined, approx. half thickness, mainly for pressureless purposes.

Available from stock in material 1.4307 and 1.4571, on request with inspection certificate EN 10204/3.1

*) previous DIN 2642



| Nennweite DN | Rohranschluss | Geböhrt nach PN | D | B2 | C1 | K | L | E | Anzahl | Gewicht |
|--------------|---------------|-----------------|-----|-------|----|-----|----|---|--------|---------|
| 10 | 17,2 | 40 | 90 | 21,0 | 10 | 60 | 14 | 3 | 4 | 0,40 |
| 15 | 21,3 | 40 | 95 | 25,0 | 10 | 65 | 14 | 3 | 4 | 0,49 |
| 20 | 26,9 | 40 | 105 | 31,0 | 10 | 75 | 14 | 4 | 4 | 0,58 |
| 25 | 33,7 | 40 | 115 | 38,0 | 10 | 85 | 14 | 4 | 4 | 0,69 |
| 32 | 42,4 | 40 | 140 | 47,0 | 10 | 100 | 18 | 5 | 4 | 1,03 |
| 40 | 44,5 | 40 | 150 | 49,2 | 10 | 110 | 18 | 5 | 4 | 1,16 |
| | 48,3 | 40 | 150 | 53,0 | 10 | 110 | 18 | 5 | 4 | 1,16 |
| 50 | 54,0 | 16 | 165 | 58,7 | 10 | 125 | 18 | 5 | 4 | 1,38 |
| | 60,3 | 16 | 165 | 65,0 | 10 | 125 | 18 | 5 | 4 | 1,38 |
| 65*) | 70,0 | 16 | 185 | 74,9 | 10 | 145 | 18 | 6 | 4 | 1,64 |
| | 76,1 | 16 | 185 | 81,0 | 10 | 145 | 18 | 6 | 4 | 1,64 |
| 80 | 84,0 | 16 | 200 | 89,1 | 10 | 160 | 18 | 6 | 8 | 1,85 |
| | 88,9 | 16 | 200 | 94,0 | 10 | 160 | 18 | 6 | 8 | 1,85 |
| 100 | 104,0 - 106,0 | 16 | 220 | 111,7 | 10 | 180 | 18 | 6 | 8 | 2,04 |
| | 114,3 | 16 | 220 | 120,0 | 10 | 180 | 18 | 6 | 8 | 2,04 |
| 125 | 129,0 | 16 | 250 | 134,3 | 12 | 210 | 18 | 6 | 8 | 3,03 |
| | 133,0 | 16 | 250 | 138,3 | 12 | 210 | 18 | 6 | 8 | 3,03 |
| | 139,7 | 16 | 250 | 145,0 | 12 | 210 | 18 | 6 | 8 | 3,03 |
| 150 | 154,0 - 156,0 | 16 | 285 | 161,7 | 12 | 240 | 22 | 6 | 8 | 3,73 |
| | 168,3 | 16 | 285 | 174,0 | 12 | 240 | 22 | 6 | 8 | 3,73 |
| 200 | 204,0 - 206,0 | 10 | 340 | 212,0 | 12 | 295 | 22 | 6 | 8 | 4,48 |
| | 219,1 | 10 | 340 | 226,0 | 12 | 295 | 22 | 6 | 8 | 4,48 |
| 250 | 254,0 - 256,0 | 10 | 395 | 264,0 | 15 | 350 | 22 | 8 | 12 | 7,02 |
| | 273,0 | 10 | 395 | 281,0 | 15 | 350 | 22 | 8 | 12 | 7,02 |
| 300 | 304,0 - 306,0 | 10 | 445 | 315,1 | 15 | 400 | 22 | 8 | 12 | 8,08 |
| | 323,9 | 10 | 445 | 333,0 | 15 | 400 | 22 | 8 | 12 | 8,08 |
| 350 | 355,6 | 10 | 505 | 365,0 | 15 | 460 | 22 | 8 | 16 | 9,91 |
| 400 | 406,4 | 10 | 565 | 416,0 | 15 | 515 | 26 | 8 | 16 | 11,72 |
| 450 | 457,2 | 10 | 615 | 467,0 | 15 | 565 | 26 | 8 | 20 | 13,90 |
| 500 | 508,0 | 10 | 670 | 519,0 | 20 | 620 | 26 | 8 | 20 | 19,40 |
| 600 | 609,6 | 10 | 780 | 622,0 | 20 | 725 | 30 | 8 | 20 | 25,60 |

*) DN 65 is usually supplied with 4 drill holes.

Additional dimensions and other thicknesses on request

