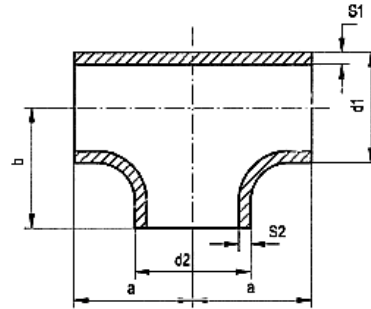


### Tee welded DIN 2615-1 / EN 10253-4

Pressed, equal, pickled, tolerances acc DIN 2609.  
On request with inspection certificate EN 10204/ 3.1



| dimensions d x s                               | dimensions a/b | weight / kg |
|--|----------------|-------------|
| <b>ISO - dimensions Mat. 1.4571 and 1.4541</b> |                |             |
| 21,3 x 2,0                                     | 25             | 0,09        |
| 26,9 x 2,0                                     | 29             | 0,12        |
| 33,7 x 2,0                                     | 38             | 0,20        |
| 42,4 x 2,0                                     | 48             | 0,32        |
| 48,3 x 2,0                                     | 57             | 0,46        |
| 48,3 x 3,0                                     | 57             | 0,55        |
| 60,3 x 2,0                                     | 64             | 0,57        |
| 60,3 x 3,0 (2,9)                               | 64             | 0,86        |
| 76,1 x 2,3                                     | 76             | 1,04        |
| 76,1 x 3,0                                     | 76             | 1,29        |
| 88,9 x 2,3                                     | 86             | 1,45        |
| 88,9 x 3,0                                     | 86             | 1,70        |
| 114,3 x 2,6                                    | 105            | 2,25        |
| 114,3 x 3,0                                    | 105            | 2,67        |
| 139,7 x 2,6                                    | 124            | 4,25        |
| 139,7 x 3,0                                    | 124            | 4,40        |
| 168,3 x 2,6                                    | 143            | 4,48        |
| 168,3 x 3,0                                    | 143            | 6,00        |
| 219,1 x 3,0                                    | 178            | 12,70       |
| 273,0 x 3,0                                    | 216            | 16,80       |
| 323,9 x 3,0                                    | 254            | 22,30       |

| dimensions d x s                     | dimensions a/b | weight / kg |
|--------------------------------------|----------------|-------------|
| <b>Metric dimensions Mat. 1.4432</b> |                |             |
| 20,0 x 2,0                           | 25             | 0,09        |
| 23,0 x 1,5                           | 30             | 0,10        |
| 25,0 x 2,0                           | 30             | 0,12        |
| 28,0 x 1,5                           | 32             | 0,14        |
| 30,0 x 2,0                           | 35             | 0,20        |
| 35,0 x 2,0                           | 40             | 0,32        |
| 38,0 x 2,0                           | 43             | 0,33        |
| 44,0 x 2,0                           | 50             | 0,35        |
| 54,0 x 2,0                           | 61             | 0,50        |
| 69,0 x 2,0                           | 73             | 0,70        |
| 84,0 x 2,0                           | 82             | 0,80        |
| 104,0 x 2,0                          | 98             | 1,60        |
| 129,0 x 2,0                          | 115            | 2,30        |
| 156,0 x 3,0                          | 135            | 3,40        |
| 206,0 x 3,0                          | 170            | 7,50        |
| 256,0 x 3,0                          | 200            | 11,30       |
| 306,0 x 3,0                          | 230            | 14,00       |

