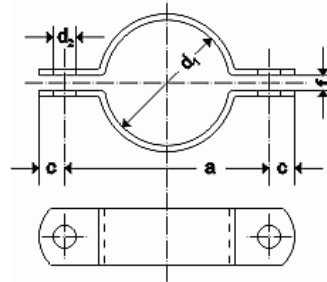


## Pipe clamps heavy DIN 3567 Form A

Produced from flat bar with rounded ends  
Available from stock in mat. 1.4301



Nominal DN	d1 pipe connection	a	c	d2	f	flat bar	bolts	weight kg/pair
15	21,3	59	15	11,5	7	30 x 5	M 10 x 30	0,19
20	26,9	66						0,24
25	33,7	72						0,26
32	42,4	76						0,30
40	44,5	84						0,30
	48,3	88						0,31
50	54,0	100	18	14	9	40 x 6	M 12 x 40	0,55
	60,3	108						0,58
65	70,0	115						0,61
	76,1	122						0,66
80	84,0	130						0,71
	88,9	136						0,75
100	104,0	162	24	18	11	50 x 8	M 16 x 45	1,60
	114,3	178						1,63
125	129,0	188						1,78
	139,7	204						1,83
150	156,0	214						2,08
	168,3	232						2,10
200	206,0	268						2,61
	219,1	280						2,64
250	256,0	336	30	23	14	60 x 8	M 20 x 50	3,90
	273,0	348						3,91
300	306,0	379						4,44
	323,9	398						4,45
350	356,0	432						5,09
400	406,0	498	36	27	18	70 x 10	M 24 x 60	8,52
450	456,0	550						9,40
500	506,0	600						10,20
600	608,0	704	36	27	22	80 x 10	M 24 x 60	13,66

