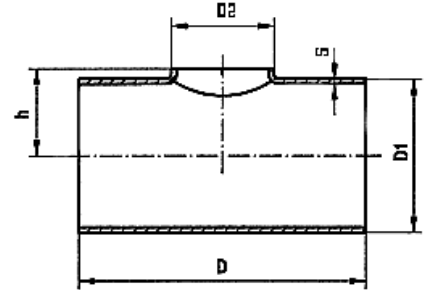


## Extruded Tees welded

Produced from welded pipe with short branch, pickled, tolerances acc. DIN 2609.

On request with inspection certificate EN 10204/ 3.1

Available in mat. 1.4307 and 1.4404/4571



dimensions DA x s	length L	height h	weight / kg
<b>ISO - dimensions</b>			
13,5 x 1,6	51	12	0,03
17,2 x 1,6	51	10	0,04
21,3 x 1,6	51	12	0,04
21,2 x 2,0	51	12	0,06
26,9 x 1,6	57	15	0,06
26,9 x 2,0	57	15	0,08
33,7 x 2,0	76	19	0,13
42,4 x 2,0	95	23	0,20
48,3 x 2,0	114	26	0,28
60,3 x 2,0	127	33	0,39
76,1 x 2,0	152	41	0,58
88,9 x 2,0	171	47	0,77
114,3 x 2,0	210	61	1,21
139,7 x 2,0	248	76	1,75
139,7 x 2,9	248	76	2,50
168,3 x 2,0	286	92	2,42
168,3 x 2,9	286	92	3,51
219,1 x 2,0	354	118	3,93
219,1 x 2,9	354	118	5,69
273,0 x 2,9	432	148	7,85

dimensions DA x s	length L	height h	weight / kg
<b>Metric dimensions</b>			
18,0 x 1,5	51	10	0,03
23,0 x 1,5	51	13	0,06
28,0 x 1,5	57	15	0,05
38,0 x 1,5	95	21	0,12
44,0 x 2,0	95	24	0,18
54,0 x 2,0	114	29	0,27
70,0 x 2,0	152	37	0,37
84,0 x 2,0	171	45	0,64
104,0 x 2,0	210	55	0,96
129,0 x 2,0	248	67	1,38
154,0 x 2,0	286	80	2,00
156,0 x 3,0	286	82	3,00
204,0 x 2,0	354	106	3,60
206,0 x 3,0	354	108	5,40
254,0 x 2,0	432	132	4,30
256,0 x 3,0	432	134	6,80

